

Characteristics of Effective Learning

The way in which we learn and our motivation is hugely important. In FS2 this term we will focus on these characteristics using our 'Lenny Lion's Learning Zoo'. Each characteristic has an animal associated with it and so the children strive to become ... Proud Peacocks, Persevering Parrots, Go for It Gorillas, Creative Chameleons, Choosing Chimps and Slinky Linky Snakes!

Reading

We encourage all children to read to you every day at home. We cannot stress enough the importance of regular reading at home. It has a huge impact on progress and confidence, providing opportunities for your child to practise the skills they've learned in school. Ten minutes a day makes such a difference! Please continue to ensure folders containing sounds and reading books are in your child's bookbag and these are in school every day.

RWI links to support your child's phonic development will continue to be shared with you on Tapestry, any questions or support needed with this then please come and see us.

Thank you, we appreciate the time you take to listen to your child read.

Handwriting

Please encourage your child to say the RWI rhyme to help them form their letters correctly when writing on the A4 sheets that come home. When your child can consistently and confidently form their letters correctly they will no longer need to say the rhyme to help them.

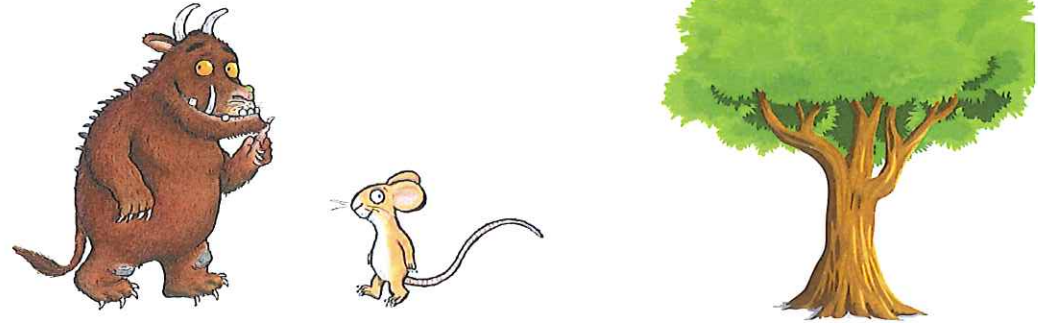
Home Challenges

Our Maths and other home challenges linked to the learning that we are doing in school will continue to be posted on Tapestry throughout the term. Please login to your child's Tapestry account to see these and any photos of your child enjoying school. We use Tapestry as one of the main communication tools for the class with sharing learning and important information so please ensure that you access this regularly.

Should you need to speak with us, we are available before and after school every day.

Thank you for your support.
The FS2 Team

Foundation Stage 2 Reception



Curriculum Advice Leaflet Spring Term 1 2024



Miss Barker, Mrs Keightley
and Mrs Simmonds

Dear Parents and Carers,

Welcome to the first half of the Spring term in FS2. This booklet will provide some information about what we will be learning about during this half term, although some things may change as we go along to reflect the children's current interests and needs. Our main topic for this half-term is called 'Into the woods we go' and the main intention of this topic is to begin to explore the world around us and to learn about the animals and creatures that live there. Storytelling and drama will take an important lead for this topic, we will be exploring our imagination and sharing our ideas about all the weird and wonderful characters we could create. We also want the children to have an understanding of what it means to have courage and to be brave.

Prime Areas

Personal, Social and Emotional Development

We will continue to develop sharing, turn taking and good listening skills with friends. We will be naming and exploring feelings and emotions and learning strategies to self-regulate our emotions when we are feeling upset or angry. In our new Jigsaw theme 'Dreams and Goals' we will learn how to persevere when we face a challenge and think about what we might like to do when we grow up. The Fundamental British Value that we will be focusing on is mutual respect.

Communication and Language

We will be learning new vocabulary relating to homes and habitats. Listening to and joining in with familiar stories and new texts. We will be asking questions and responding to others to gain more information and to continue dialogue. Talking about ourselves and expressing interests and sharing experiences. We will also be retelling parts of stories using story language and creating a sequence of events to tell our own story.

Physical Development

We will continue to develop fine motor control and coordination. We will develop overall body-strength, balance, co-ordination, and agility through activities that use our body weight to push and pull. We will also develop our confidence, competence, precision and accuracy when engaging in activities involving a ball. Through group sessions we will focus on developing our handwriting so that it starts to become fast, accurate and efficient.

Specific Areas

Literacy

Within Literacy we will be listening to stories and joining in with actions and story language to help us to remember the story. We will also be creating and retelling our own stories. Our main text this half term is 'The Gruffalo' by Julia Donaldson. We will also share a range of texts to support our themes on Winter, Woodland creatures, Habitats and Bravery. In Phonics we will continue to learn how to read and write set 1 simple sounds. We will practise segmenting and blending sounds together to read and write simple captions. We will also learn some high frequency (red) words.

Maths

In Maths we will introduce the number zero and continue to develop an understanding of comparing numbers. We will further develop the understanding that all numbers are made up of smaller numbers (composition of numbers to 5). Encourage children to subitise (instantly recognise small quantities without counting). We will investigate the composition of the numbers 6, 7 and 8 plus work on our addition and subtraction skills by combining groups and taking away. We will make direct comparisons between the weight of items, using balance scales to check. We will also build on our understanding of capacity and explore length, height and time.

Understanding the World

As part of our work on comprehending the world around us we will be talking about myself and my family and the things we like to do. We will be listening to others and understanding that families are all different. Talking about and recognising differences in how we celebrate in our families and compare changes over time. We will learn about our local area and identify things in our local environment. Our RE work this half term will focus on "Being Special and Where do we belong?" As always we will learn about different people and about each other. We continue to develop understanding and respect for all people at all times. We will find out about the Chinese New Year and how it is celebrated.

Expressive Arts and Design

As part of our work in this area of development we will explore and mix our own colours, focusing on dark and light shades. We will make large scale pictures outdoors using materials found in the natural environment. Use a range of familiar and new stories within our play, act them out, adapt them and create our own. We will use instruments to represent different characters or parts of a book. We will also sing new songs and represent our own feelings by moving to music.